

August Bank Holiday Saturday  
29th August 2026

# CREATIVE HOBBIES

competitive section  
for amateurs only



art - baking - crafts - wine - preserves -  
photography

Schedule and entry form is available online  
[poyntonshow.co.uk//creative-hobbies/](http://poyntonshow.co.uk//creative-hobbies/)

## Free Activities on Show Day

Quilling	Peg Dolls
Friendship bracelets	Weaving
Tissue paper flowers	Collage pictures

Display of Art Work from Local Primary Schools  
Competition

## **CREATIVE HOBBIES**

Hello, come and join the fun - if you are an amateur and do not make items to sell, choose a class for your age group and have a go. You might be the proud winner of one of our colourful rosettes or even a trophy.

Our theme for class 1 this year is 'Fantasy or Fairy Tales' providing plenty of scope for imaginative characters or structures like caves or castles. Class 1 is a great opportunity to work with your friends or family and recycle 'junk' plus it's free to enter.

Our dedicated team of volunteers will be running our popular free craft activities throughout the day - mainly for kids but adults can have go too. More details later in the schedule.

So everyone can be involved, last year we introduced a 'public vote' for your favourite piece from the adult art section. The winner received a red rosette. Which will you choose this year? Prior to the Show we hold a local primary school art competition and we are very proud to display all the entries in the marquee.

A very big thank you to all our

**Exhibitors - Visitors - Volunteers - Sponsors**

It is your continued support and enthusiasm that creates our amazing Creative Hobbies marquee within Poynton Show.

**We are keen to see Creative Hobbies continue but it must evolve with new ideas and people.**

**Do you have skills, interests or ideas that could help Creative Hobbies?**

Suggestions - IT, organisation, craft, ability to move tables and boards, working in a team, recording data, helping the public, setting up the marquee, review, ideas etc.

Whatever you can offer will be welcome.

Please email: [poyntonshow1885@gmail.com](mailto:poyntonshow1885@gmail.com)

We look forward to seeing you on the day.

**TO ENTER CREATIVE HOBBIES YOU MUST BE AN AMATEUR AND NOT PRODUCE ITEMS FOR SALE**

Adult entries are **£1.50** each

Children's entries are **£1.00** each

***Enter 6 items per person, pay for 5***

1. **Download ONE entry form per person from [www.poyntonshow.co.uk](http://www.poyntonshow.co.uk)**

Or pick up an entry form from

**MATES DIY**

**POYNTON INFORMATION CENTRE**

**SHOW CARAVAN** on the Civic Hall car park,

One week prior to the Show.

2. **Complete the form and with the entry fee, hand into the Show Caravan**, on the Civic Hall car park, one week prior to the Show or post to Creative Hobbies, 41 Micawber Road, Poynton, SK12 1UP

**ENTRY FORMS MUST BE IN BEFORE Thursday 27th August 5.00pm**

**DELIVER** exhibits to the Creative Hobbies marquee on either

**FRIDAY 5.00pm - 7.45pm, when the marquee closes. Allow time to unwrap and display your exhibits**

**SATURDAY 7.00am - 7.45am, when the marquee closes for judging. Allow time to unwrap and display your exhibits**

**JUDGING** is Saturday 8.00am - 10.30am  
**Marquee is closed during judging**

**EXHIBITS** are the responsibility of the exhibitor

**COLLECT** exhibits on Saturday **4.30 - 5.30pm** after the trophies have been presented at 4.00pm  
**UNABLE TO COLLECT AT THIS TIME?** We can look after your exhibits for a short time if you ask at reception in the marquee.

**5.30pm** - marquee is cleared, uncollected exhibits will be placed on a table in the marquee until 6.30pm

**6.30pm** - remaining exhibits will be taken to the Show Office on the ground.

## CLASS 1

### Free Entry

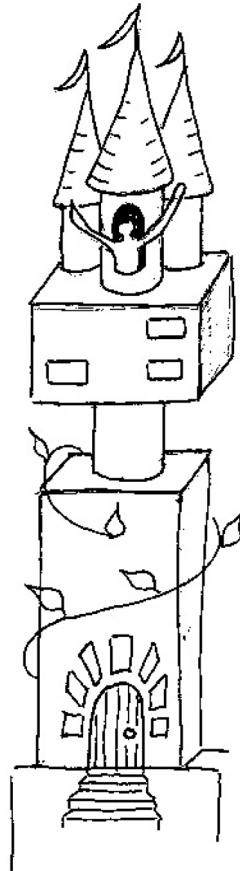
For groups and individuals

# FANTASY OR FAIRY TALES

Trolls  
Castles Witches  
Gnomes  
Houses  
Beanstalks Monsters

Unicorns

Gingerbread  
Dragons



reuse : recycle : reduce

Create your own freestanding model

**HEIGHT: more than 75cm**

**BASE: less than 1 metre x 1 metre**

## SPONSORSHIP

quilling - weaving - tissue paper flowers - peg doll  
collage - friendship bracelets

These are our drop in style **free activities** running throughout Show Day. To deliver these we rely on sponsorship and donations of materials.

If you or your company would like to make a donation or sponsor next years activities please talk to us on the day or

email : [poyntonshow1885@gmail.com](mailto:poyntonshow1885@gmail.com)



## **ART Adults,**

Must be your own original work Art can be framed. It will be displayed on peg boards Hooks will be provided

Please cover all visible signatures

### **CLASS NO:**

2. **WATERCOLOUR and GOUACHE** any subject
3. **LANDSCAPE or SEASCAPE**, any colour medium
4. **STILL LIFE or FLOWER STUDY**, any colour medium
5. **PORTRAIT**, any medium
6. **WILDLIFE**, any medium
7. **BLACK and WHITE DRAWING**, any subject, pen, pencil, charcoal, etching, lino print etc.
8. **'ABSTRACT'**, any colour medium, could include print or collage.
9. **A FAVOURITE ARTWORK**, any medium, any subject, could include social scenes, holidays, family, urban landscape etc
10. **CLIMATE CHANGE**, any medium to create an art work to reflect the subject.

**Entry forms to be in before 5.00pm Thursday 27th August.**

**Please bring exhibits to the Creative Hobbies Marquee on Friday 5.00pm - 7.45pm or Saturday 7.00 - 7.45am**

## **CRAFTS Adults, Amateurs Only**

Presentation is on tables. Small props can be brought in to help display items, they will not be considered by the judges Sometimes entries are submitted to the wrong class - judges have the right to move entries as they see appropriate.

### **CLASS NO:**

11. **SEW A GARMENT TO INCLUDE BUTTONS and BUTTONHOLES** eg. Blouse, shirt, jacket, coat, waistcoat
12. **SEW A GARMENT TO INCLUDE A ZIP** eg. skirt, trousers, dress
13. **SEW A GARMENT - no zips/buttons** eg hats, ties, blouse
14. **KNIT OR CROCHET A GARMENT. SCARF OR WRAP**
15. **BLANKETS AND CUSHIONS** - sew, knit or crochet. Do not include patchwork/applique
16. **PATCHWORK OR APPLIQUE**, any item, not bags
17. **BAGS** - any technique and decoration
18. **3D SCULPTURAL OBJECTS** eg toys, fruits, veg, flowers using fabrics or wools, any technique
19. **STITCHED or FELTED PICTURE**, using a commercial kit
20. **STITCHED or FELTED PICTURE**, own design, any technique
21. **JEWELLERY**, handmade item using any material
22. **CERAMICS**, any small item
23. **DECORATE AN ITEM**, eg painting, stitching
24. **WOODWORK OR METALWORK**
25. **'SAVING THE PLANET'**, rework, recycle or up-cycle to create something new, any material, any technique



## **BAKING** Adults, Amateurs Only

**Please cover food items if bringing on Friday  
Exhibits will be uncovered before judging**

### **CLASS NO:**

26. **3 EGG VICTORIA SANDWICH CAKE**, 2 cakes sandwiched together with jam and dusted with caster sugar.
27. **SPONGE CAKE**, any shape or flavour eg lemon drizzle, coffee & walnut, chocolate
28. **TRADITIONAL FRUIT CAKE**, eg. fruit loaf, Dundee cake, Bara brith
29. **VEGGIE CAKE**, show the use of vegetables, state what the main ingredient is on a non identifiable label eg. carrot, courgette
30. **'FREE FROM' CAKE**, state what the cake is free from, eg. gluten, fat, eggs, on a non identifiable label. **DO NOT** include tray bakes
31. **4 SLICES OF TRAYBAKE**
32. **3 or 4 COOKIES/BISCUITS** eg. shortbread, choc chip.
33. **3 or 4 SWEET or SAVOURY SCONES**
34. **OPEN TART using SHORTCRUST PASTRY**, pastry crust base with filling eg lemon meringue pie, apple tart, treacle tart, Bakewell tart etc.
35. **3 SWEET or SAVOURY TARTLETS** eg. mini quiches, custard tarts, jam tarts
36. **LOAF of BREAD**, any shape, any flavour
37. **3 BREAD BASED ROLLS** eg teacakes, brioche, shaped bread
38. **DECORATED CELEBRATION CAKE**, 1 tier, all decoration to be edible, judged visually only. A 'dummy cake' can be used
39. **CONFECTIONARY**, make and present 50 -100g eg. fudge, chocolate truffles, toffee

**Judging criteria for the baking section is on the next page.**

**Entry forms to be in before 5.00pm Thursday. 27th August**

**Please bring your exhibits to the Creative Hobbies Marquee on Friday 5.00pm - 7.45pm OR Saturday 7.00am - 7.45am**

**Trophies and Awards will be presented at 4.00pm, Show Day**

## Judging Criteria for Baking

To ensure fairness and clarity, entries will be assessed on three key areas:

**Each entry is marked out of 20 and includes 3 areas TASTE, PRESENTATION and TECHNICAL ABILITY.**

The highest marks will go to bakes that combine excellent flavour with attractive presentation and sound technique.

However, if it doesn't taste good it doesn't matter how good it looks.

### 1. TASTE for 10 marks

Taste is the most important factor. Judges will consider:

- **Flavour balance** – sweetness, seasoning, and overall harmony.
- **Texture** – appropriate for the bake (e.g., light sponge, crisp pastry, moist crumb).
- **Freshness and quality** – ingredients should shine and the bake be enjoyable to eat.

### 2. PRESENTATION for 5 marks

Presentation creates the first impression. Judges will look for:

- **Visual appeal** – neatness, creativity, and attractiveness.
- **Consistency** – even portions, tidy finish and attention to detail.
- **Suitability** – does the presentation suit the type of bake and occasion?

### 3. TECHNICAL SKILL for 5 marks

This reflects the baker's ability and precision. Judges will assess:

- **Correct techniques** – proper rise, bake, and texture.
- **Accuracy** – even cooking, no raw or burnt areas.
- **Complexity** – skill demonstrated in shaping, decoration, or method.

**Entry forms to be in before 5.00pm Thursday. 27th August**

**Please bring your exhibits to the Creative Hobbies Marquee on Friday 5.00pm - 8.00pm OR Saturday 7.00am - 8.00am**

**Trophies and Awards will be presented at 4.00pm, Show Day  
Please collect exhibits 4.30pm - 5.30pm**



## PRESERVES

**DO NOT SUBMIT PRESERVES MADE BEFORE AUGUST 2025**

Preserves made over a year ago lose their flavour

**Entries to be 225g/8oz minimum**

**No visible trade marks or names on jars or lids**

**Label all entries with the full date of making**

### Presenting Vinegar Preserves

- Cover jars with a plastic lined, metal lid or use a clip top
- Allow 2-3 months for the flavour to develop but not beyond 12 months
- Unusual chutneys should have a 2nd label listing the ingredients
- Always state the amount of heat if applicable

**The Judge is looking for:**

- The correct presentation as described above
- Good flavour
- Good texture and colour

**CLASS NO:**

40. **JAR OF CHUTNEY OR RELISH**

41 **JAR OF PICKLED VEGETABLES OR PICCALILLI**

**Entry forms to be in before 5.00pm Thursday 27th August**  
**Please bring exhibits to the Creative Hobbies marquee on**  
**Friday 5.00pm - 7.45pm or Saturday 7.00am - 7.45am**  
**Presentations at 4.00pm, please collect exhibits at 4.30pm**

### Presenting Jams, Jellies, Marmalades and Curds

- Cover jars with a waxed disc and cellophane or twist top lid
- It is preferable to use new lids, old lids must be scrupulously clean and free from damage. **Never reuse chutney lids**
- **Curds must not be more than 3 weeks old and always covered with a waxed disc and cellophane**

**The Judge is looking for:**

- The correct presentation as described above - lids, jars, labels
- Evenly distributed fruit. Cool slightly before filling the jars
- No tough fruit skins or seeds
- Good flavour, good quality ingredients help produce a superior product
- Choose complimentary ingredients

**CLASS NO:**

42. **JAR OF JELLY**

43 **JAR OF STRAWBERRY JAM**

44. **JAR OF JAM**, soft fruit but not strawberry

45. **JAR OF JAM**, stoned fruit eg. plum, damson

46. **JAR OF JAM**, mixed or exotic fruits or vegetables

47. **JAR OF MARMALADE** eg. lemon, lime, orange, mixed

48 **JAR OF FRUIT CURD** eg. lemon, lime



## WINE

**Fermentation** - wine must be made by this process with no added commercial alcohol, except in liqueurs **Bottles** - present wines in clear glass bottles approx 75cl. and fruit liquors in 33cl (half bottles)

**Airspace** - should be 1/2 - 1 inch below the bottom of the closure

**Corks** - white, plastic topped cork stoppers

### CLASS NO:

#### 49 **TABLE WHITE DRY WINE**

A pale colour is desirable with no brown or pink tones. Wine should be dry with no recognisable sweetness. There should be no bitter aftertaste but leave the mouth feeling clean

#### 50. **TABLE RED DRY WINE**

Colour should be red but hints of purple and tawny are acceptable. There should be no recognisable sweetness

51. **COUNTRY WINE, DRY, WHITE**, state the main ingredient on the label eg. apple  
There should be no recognisable sweetness.  
The colour can range from clear to golden

52. **COUNTRY WINE, DRY, RED**, state the main ingredient on the label eg. blackberry There should be no recognisable sweetness. The colour should be red but hints of purple and tawny are acceptable.

**THERE IS A RECIPE FOR APPLE & GRAPE COUNTRY OR TABLE WINE AT THE BACK OF THE SCHEDULE**

#### 53. **WHITE or GOLDEN SWEET WINE**

Colour can be deeper than that of the white table wine, up to golden.

Flavour should be richer than the white table wine but with enough balance to prevent a cloying finish.

#### 54. **RED SWEET WINE**

Colour should be red but hints of purple and tawny are acceptable.  
Flavour should be richer than the red table wine with enough balance to prevent a cloying finish.

#### 55. **FRUIT LIQUEUR**, 1/2 bottle (33cl)

Fully flavoured and not too sweet

#### 56 **ROSE MEDIUM DRY**

Colour should be pink but variations are acceptable eg. light orange and onion skin colour. Flavour should be fresh, fruity and light with a good balance between acidity and sweetness.

57. **SPECIAL CLASS** - Beaverville Cabernet Sauvignon

58. **SPECIAL CLASS** - Beaverville Sauvignon Blanc

**Next year in 2027 the SPECIAL CLASSES will be Beaverville Cabernet Sauvignon and Beaverville Sauvignon Blanc**

**Entry forms to be in before 5.00pm Thursday, 27th August  
Please bring your exhibits to the Creative Hobbies Marquee on Friday 5.00 - 7.45pm OR Saturday 7.00am - 7.45am Trophies and Awards will be presented at 4.00pm**



## PHOTOGRAPHY

Adults amateur photographers only

### MAX SIZE - A4

Please no glass frames

Mount photographs on stiff paper/thin card

(Mount board bends in the dampness)

Blu Tac will be provided, please **do not staple** entries onto the display boards

### CLASS NO:

59. **NATURE**, plants or animals

60. **LANDSCAPE**

61. **PORTRAIT**

62. **MONOCHROME** eg. sepia, black and white

63. **OPEN PHOTOGRAPHY**

Entry forms must be in before 5.00pm Thursday 27th August

Please bring your exhibits to the Creative Hobbies marquee on Friday 5.00pm - 7.45pm or Saturday 7.00am - 7.45am

Trophies and awards will be presented at 4.00pm Show Day

Exhibits can be collected after the presentations Our Photographic judge would like to share a few tips when taking photographs for competitions.

- Keep it simple. Very often photographs that win competitions are very simple.
- A good photograph is one that produces an emotional response
- Avoid cluttered backgrounds, especially those with bright highlights
- Get down low and shoot from the eye line of your subject
- Take care with composition and make sure there is a focal point
- Landscape - shoot within an hour of sunrise or sunset
- Portraits - engage with your subject and get good eye contact
- Good processing on the computer is as important as taking a good photograph
- Never go out without your camera - your best shot could be today!
- A photograph is an art form - don't expect everyone to enjoy your work.

Members of North Cheshire Photographic Society will be available on Show Day to give advice on your photographs

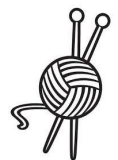
Please collect exhibits 4.30 - 5.30pm

Uncollected exhibits will be taken to the Show Office on the Show ground 6.30pm



**ART** (12 - 16 years) Maximum size 60cm x 50cm (24in x 20in) All entries must be your own work Please cover all visible signatures *Items made at school can be entered*

- 64. **A FAVOURITE ARTWORK**
- 65. **A PAINTING** - any subject, any technique
- 66. **PORTRAIT** - celebrity, pets, family, friend etc. any medium
- 67. **CREATE A DESIGN FOR A TEE SHIRT**
- 68. **DRAWING** - any subject, pencil, pen, charcoal, graphite etc.



**CRAFTS** (12 - 16 years)  
*Items made at school can be entered*

- 69. **WOODWORK, METALWORK, CERAMICS, JEWELLERY** any handmade item
- 70. **SEWING, KNITTING, CROCHETING, EMBROIDERY, WEAVING, MACRAME**, any handmade garment or item
- 71. **OPEN CLASS** - handmade item using any material or technique
- 72.. **REPURPOSE AN ITEM (s)** - eg patchwork bags from old clothes, Papier mache animals or bowls from paper.

Trophies and Awards will be presented at 4.00pm, please collect exhibits 4.30 - 5.30pm



**BAKING** (12 - 16 years)

Please cover all food if bringing on Friday, Covers will be removed prior to judging See the adult section for tips on entering the baking section

- 73. **SPONGE CAKE** - any shape and flavour eg. lemon drizzle, chocolate, carrot
- 74. **4 SLICES OF TRAYBAKE** - eg. flapjack, choc brownies etc
- 75. **3 COOKIES or BISCUITS**
- 76. **3 SWEET OR SAVOURY SCONES**

**PHOTOGRAPHY** (12 - 16 years )

Max size - A4.  
Mount photos on thin card or stiff paper, no frames/glass/mount board.



- 77. **NATURE**, animals or plants
- 78. **PORTRAIT**, friends, family, animals,
- 79. **LANDSCAPE**, countryside or the city
- 80. **LOCAL PHOTOGRAPH**
- 81. **OPEN PHOTOGRAPH**

Entry forms to be in before 5.00pm Thursday, 27th August

Please bring your exhibits to the Creative Hobbies Marque on Friday 5.00pm - 7.45pm OR Saturday 7.00am - 7.45am



## **ART ( 8 - 11 years )**

**Maximum size A3**

***All entries must be your own work***

- 82. **A FAVOURITE ARTWORK** - any subject and technique
- 83. **A PAINTING** - any subject, use any colour medium eg. pets, buildings, landscape, yourself or family
- 84. **ABSTRACT PAINTING OR PATTERN** - any medium
- 85. **COLLAGE** - any materials eg. recycled, papers, leaves etc
- 86. **DRAW AN ANIMAL OF YOUR OWN CREATION** - give it a name.
- 87. **COLOUR IN** - a pre printed picture of your choice



## **BAKING ( 8 -11 years )**

**Only exhibit the specified number of cakes**

**Please cover all baking if bringing in on Friday**

**Covers will be removed before judging**

- 88. **3 EGG VICTORIA SANDWICH CAKE** - 2 cakes sandwiched together with jam and dusted with caster sugar
- 89. **NO BAKE SWEETS** - Krispie cakes, truffles, rocky road, mint creams, coconut ice
- 90. **4 TRAY BAKES** eg. flapjack, millionaire shortbread
- 91. **3 OR 4 COOKIES or BISCUITS**

## **CRAFTS ( 8 - 11 years)**

***All entries must be your own work.***



- 92. **DECORATE ONE PEBBLE**
- 93. **DECORATE ONE HARD BOILED EGG**
- 94. **LEGO MODELLING** - your own design using a commercial materials
- 95. **MODELLING** - your own design using clay or clay type materials like Fimo, plasticine, mod roc etc
- 96. **ECO - MODELLING** - own design re-using old items eg. plastic bottles, packaging or natural materials like sticks and leaves
- 97. **SHOEBOX DIORAMA** - create a mini world within a box using recycled items if you can. Max size: 40 x 30 x15cm
- 98. **SEWING, KNITTING, EMBROIDERY, WEAVING, CERAMICS** any item showing traditional crafts

**JEWELLERY** - bracelets, necklaces using commercial or hand made beads

## **PHOTOGRAPHY is now one group, under 12's and is on the next page**

**Entry forms to be in before 5.00pm Thursday 27th August**  
**Please bring your exhibits to the Creative Hobbies Marquee**  
**Friday 5.00pm - 7.45pm OR Saturday 7.00am - 8.7.45am**  
**Please collect exhibits 4.30 - 5.30pm, after the presentations**



## ART ( 4 - 7 years)

Maximum size A3 *All entries must be your own work*

- 100. FAVOURITE ARTWORK
- 101. A PICTURE OF 'ME', FAMILY OR FRIENDS
- 102. CHARACTER FROM A BOOK - drawing or painting, say who it is.
- 103. FLOWER - draw or paint a flower
- 104. COLOUR IN - colour in a pre printed picture of your choice



## BAKING ( 4 - 7 years)

Please cover food if bringing in on Friday, it will be uncovered before judging

- 106. 3 COOKIES
- 107. 3 DECORATED BOUGHT BISCUITS - judged visually only
- 108. 3 NO BAKE CAKES - Krispie, rocky road, cornflake
- 109. 3 SMALL CAKES - use a commercial cake mix

Entry forms must be in before Thursday 5.00pm, 27th August

## CRAFTS ( 4 - 7 years)

*All entries must be your own work*



- 110. DECORATE ONE PEBBLE
- 111. DECORATE ONE HARD BOILED EGG
- 112. PAPER PLATE OR CIRCLE COLLAGE - any materials
- 113. PLASTIC BRICK MODEL - your own ideas
- 114. REPURPOSE AN ITEM(S) - cereal boxes, plastic pots, clothes
- 115. SHOE BOX DIORAMA - create a mini world within a box using recycled materials. Max size 40 x 30 x 15cm

## PHOTOGRAPHY (UNDER 12)

Photo size 18 x13cm (7 x 5in)

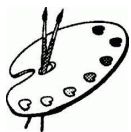
Mount photos on stiff paper or card

No frames or glass



- 116. A LOCAL PHOTOGRAPH
- 117. MY HOLIDAYS
- 118. ANIMAL(S)
- 119. PHOTO TO MAKE YOU SMILE
- 120. A FAVOURITE PLACE

Please bring your exhibits to the Creative Hobbies Marquee on Friday 5.00pm - 7.45pm OR Saturday 7.00am - 7.45am



## **ART** ( under 4 )

Maximum size A3

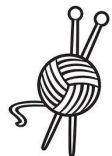
*All entries must be your own work, please no adult help*

**PRINTMAKING** - eg potato, hand, leaves, commercial stamping

122. **PICTURE** of 'ME' OR MY FAMILY

123. **MY FAVOURITE ARTWORK**

124. **FLOWER(S)** any medium



## **CRAFTS** ( under 4 )

125. **BRICK MODEL** - using any commercial bricks eg. Duplo

126. **DECORATE ONE PEBBLE**

127. **PAPER PLATE OR CIRCLE FACE**



## **BAKING** ( under 4 )

judged visually

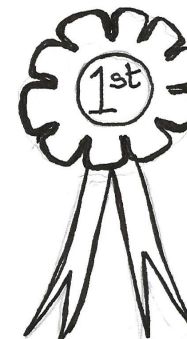
128. **3 DECORATED BOUGHT BISCUITS**

129. **3 NO BAKE CAKES**

Entry forms must be in before Thursday 5.00pm 27th August  
Please bring your exhibits to the Creative Hobbies Marquee on  
Friday 5.00pm - 7.45pm OR Saturday 7.00am - 7.45am

## **TROPHIES AND AWARDS**

4.00pm - the presentation of the Trophies



### **ROSETTES**

1st, 2nd and 3rd place are awarded in each class  
Rosettes can be collected anytime during the day

**BEST IN SHOW ROSETTES** are awarded to the best entry in each section

art - baking - crafts - photography - wine - preserves.  
Rosettes can be collected anytime during the day.

**TROPHIES** are awarded for the most points gained in each section. 1st = 3 points, 2nd = 2 points, 3rd = 1 point

Trophies will be presented at 4.00pm in the marquee

## PRIMARY SCHOOLS ART COMPETITION

All the children's art work will be on display in the marquee and this years title is

### LIFE IN THE SEA

We invite local primary schools to participate in our annual art competition and submit A4 entries worked in any medium based on our chosen theme.

All entries receive a *free* child pass to Poynton Show.

The entries are judged in year groups and 1st, 2nd, 3rd place certificates and rosettes are awarded in addition to an overall winner - Best in Show.

Certificates are delivered to the schools before the end of term.

Rosettes can be collected on the day.

If your school would like to participate next year, please leave contact details with a member of the team on Show Day.



## Apple and Grape Dry White Country or Table Wine

Makes 1 gallon/4.5 litres

### Ingredients

2litres apple juice 1  
litre grape juice  
1Kilo granulated sugar 1  
teaspoon pectolase  
1 teaspoon yeast nutrient  
Sachet white wine yeast  
1 Campden tablet.

**Equipment** 2 Demijohns  
(these are 1 gallon/4.5litre  
containers)

Fermentation air lock  
Rubber/plastic bung  
(to store wine)  
Siphon tube

### Method

1. Put the apple juice and grape juice into one Demijohn
2. Dissolve the sugar in 1 litre of boiling water, stir to mix and cool.
3. When lukewarm add to juices in Demijohn. If necessary top up with lukewarm water to 5cm(2 inches) below the neck of the Demijohn
4. Add pectolase and yeast nutrient, shake to mix
5. Sprinkle sachet of yeast on top, **do not mix**
6. Attach the fermentation lock

Fermentation should start within 2 hours. Allow to ferment for 3 weeks or until no more air passes through the fermentation lock. Time can be influenced by the weather.

8. Siphon off the wine into the 2nd Demijohn
9. Add the crushed Campden tablet to preserve the wine. Shake well to remove any remaining air.
10. Insert the rubber bung and leave to mature.

READY FOR DRINKING IN ONE MONTH

Alternatives - use any flavour of fruit juice from a carton eg mango, pear etc.

## Health and Safety

All exhibitors should comply with the requirements set out in the Health and Safety Policy, for the Poynton Horticultural and Agricultural Society. Copies of the policy are available from the Society Secretary and will be displayed in the Show Office during the Show.

Specifically, all the exhibitors, trade stands and occupiers, entertainment and catering providers are required to maintain their exhibits/area in such a manner as to comply with current Health and Safety regulations and guidance and to ensure their activities do not endanger themselves or other exhibitors or members of the public. Further specific advice and guidance is available from the Show's Honorary Health and Safety Officer.

[www.poyntonshow.co.uk](http://www.poyntonshow.co.uk)

### Personal Data

Poynton Show values your support and respects your privacy. We are committed to protecting your personal data and the processing of it, only in accordance with legal requirements. For more details please go to our website and view the 'Private Policy' page

[www.poyntonshow.co.uk](http://www.poyntonshow.co.uk)

## VOLUNTEERS

Creative Hobbies and Poynton Show would love the help and support from more volunteers. If you would like to help with the planning, preparation or delivery of Creative Hobbies or the Show please email [poyntonshow1885@gmail.com](mailto:poyntonshow1885@gmail.com) or come and have a chat on Show Day, we look forward to meeting you.

We need younger people who can secure the future of both Creative Hobbies and Poynton Show, Your help is important.



**ENTRY FORMS  
AND**

**MORE INFORMATION IS AVAILABLE  
ON THE WEBSITE**

**PLEASE VISIT**

**[poyntonshow.co.uk/creative-hobbies/](http://poyntonshow.co.uk/creative-hobbies/)**

