

August Bank Holiday Saturday
24th August 2024

CREATIVE HOBBIES

competitive section



art - baking - crafts - wine - preserves
photography

ENTRY FORMS

these are no longer included in the schedule
please collect from;

- Poynton Information Centre
- Show Caravan
- Mates DIY, Park Lane, Poynton
- Online www.poyntonshow.co.uk//creative-hobbies/

A more detailed schedule and entry forms are available online
<https://www.poyntonshow.co.uk//creative-hobbies/>

CREATIVE HOBBIES

Welcome to Creative Hobbies, we hope you are excited and eager to join in the fun. The theme this year for our free Class 1 is Heroes and Villains. A great opportunity to work with friends or family and transform your 'junk' into a known or your own, hero or villain.

Come and visit us on Show Day. Children will love to join in with our exciting craft activities organised by experienced volunteers.

We will also be exhibiting the entries for the local primary schools competition, 'Views of Lyme'

4.00pm - Presentation of trophies and awards but if you have won a rosette, these can be collected anytime from 10.30am when the judging has finished.

**THERE ARE NO ENTRY FORMS IN THE SCHEDULE
please download from**

<https://poyntonshow.co.uk/creative-hobbies/>

HOW TO ENTER

Adult entries are **£1.00** each

Children's entries are **50p** each

ENTRY FORMS are available from Mates DIY, Poynton Information Centre, Show Caravan or download from the Show website **www.poyntonshow.co.uk**

1. **Use 1 entry form per person**
2. **Complete the entry form and put in an envelope with the fee**
3. **Label the envelope - CREATIVE HOBBIES**
4. **Hand into the Show Caravan on the Civic Hall car park the week before the Show**
OR Post to Creative Hobbies, 41 Micawber Road, Poynton, SK12 1UP

ENTRY FORMS MUST BE IN BEFORE Thursday, 22nd August 5.00pm

EXHIBITS

Please bring to the Creative Hobbies marquee on

1. **FRIDAY, 5.00pm - 8.00pm OR**
 2. **SATURDAY, 7.00am - 8.00am** on Show Day
- Exhibits are the responsibility of the exhibitor

Please allow time to display your exhibits

Marquee closes at 8.00 pm FRIDAY

Marquee closes at 8.00am SATURDAY for judging

Please collect exhibits between 4.30 and 5.30pm when the trophies have been presented at 4.00pm. Uncollected entries will be handed into the Show Office on the ground.

HOW TO ENTER

Adult entries are **£1.00** each
Children's entries are **50p** each

ENTRY FORMS are available from Mates DIY,
Poynton Information Centre, Show Caravan or
download from the Show website
www.poyntonshow.co.uk

- 1. Use 1 entry form per person**
- 2. Complete the entry form and put in an envelope with the fee**
- 3. Label the envelope - CREATIVE HOBBIES**
- 4. Hand into the Show Caravan on the Civic Hall car park the week before the Show**

**OR Post to Creative Hobbies,
41 Micawber Road,
Poynton, SK12 1UP**

**ENTRY FORMS MUST BE IN BEFORE 5.00pm,
Thursday, 22nd August**

EXHIBITS

Please see the first page for information on bringing your exhibits to the Creative Hobbies marquee and when to collect them at the end of the day.

CLASS 1

Free Entry

For groups and individuals



Free standing junk model

HEIGHT: more than 60cm

BASE: less than 1 metre x 1 metre



ART

Adults

Art can be framed

Please cover all visible signatures

Display is on peg boards, hooks will be provided

All art must be your own and original work

CLASS NO:

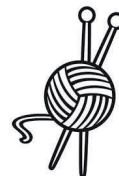
2. **WATERCOLOUR and GOUACHE** any subject
3. **LANDSCAPE or SEASCAPE**, any colour medium
4. **STILL LIFE or FLOWER STUDY**, any colour medium
5. **PORTRAIT**, any medium
6. **WILDLIFE**, any medium
7. **BLACK and WHITE DRAWING**, any subject, pen, pencil, charcoal, etching, lino print etc.
8. **'ABSTRACT'**, any colour medium, could include print or collage.
9. **A FAVOURITE ARTWORK**, any medium, any subject, could include social scenes, holidays, family, urban landscape etc
10. **CLIMATE CHANGE**, any medium to create an art work to reflect the subject. Eg. the consequences of climate change or actions we can take to reduce it.

CRAFTS

Adults

Presentation is on tables

Small props can be brought in to help display the items. Props will not be considered by the judges



CLASS NO:

11. **SEWING**, any garment or item
12. **KNITTING**, any garment or item
13. **CROCHETING**, any garment or item
14. **PATCHWORK OR APPLIQUE**, any garment or item
15. **SOFT TOY**, using any material or technique
16. **JEWELLERY**, handmade item using any material or technique
17. **CERAMICS**, any small item
18. **WOODWORK OR METALWORK**
19. **OPEN CLASS**, handmade item using any material or technique
20. **'SAVING THE PLANET'**, rework, recycle or up-cycle to create something new - any material or technique

Entry forms to be in before 5.00pm Thursday, 22nd August

Please bring your exhibits to the Creative Hobbies Marquee on Friday 5.00pm - 8.00pm OR Saturday 7.00am - 8.00am

**Trophies and Awards will be presented at 4.00pm.
Exhibits can be collected after the presentations.**



BAKING

Adults

Please cover food items if bringing on Friday

Exhibits will be uncovered before judging

Please use non identifiable labels where asked

CLASS NO:

21. **3 EGG VICTORIA SANDWICH CAKE**, 2 cakes sandwiched together with jam and dusted with caster sugar.
22. **SPONGE CAKE**, any shape or flavour eg lemon drizzle, coffee & walnut, chocolate
23. **TRADITIONAL FRUIT CAKE**, eg. fruit loaf, Dundee cake, Bara brith
24. **VEGGIE CAKE**, show the use of vegetables, state what the main ingredient is on a non identifiable label eg. carrot, courgette
25. **'FREE FROM' CAKE**, state what the cake is free from, eg. gluten, fat, eggs, on a non identifiable label.
DO NOT include tray bakes
26. **4 SLICES OF TRAYBAKE**
27. **3 or 4 COOKIES/BISCUITS** eg. shortbread, choc chip.
28. **3 or 4 SWEET or SAVOURY SCONES**

- 29. **FRUIT PIE using SHORTCRUST PASTRY**, top and bottom crust
- 30. **3 SWEET or SAVOURY TARTLETS** eg. mini quiches, custard tarts, jam tarts
- 31. **LOAF of BREAD**, any shape, any flavour
- 32. **DECORATED CELEBRATION CAKE**, 1 tier, all decoration to be edible, judged visually only. A 'dummy cake' can be used
- 33. **CONFECTIONARY**, make and present 50 -100g eg. fudge, chocolate truffles, toffee

Entry forms to be in before 5.00pm Thursday. 22nd August

Please bring your exhibits to the Creative Hobbies Marquee on Friday 5.00pm - 8.00pm OR Saturday 7.00am - 8.00am

Trophies and Awards will be presented at 4.00pm, Show Day

Please collect entries after the presentations



PRESERVES

**DO NOT SUBMIT PRESERVES MADE BEFORE
AUGUST 2023**

Preserves made over a year ago lose their flavour

- **Entries to be 225g/8oz minimum**
- **No visible trade marks or names on jars or lids**
- **Label all entries with the full date of making**

Presenting Vinegar Preserves

- Cover jars with a plastic lined, metal lid or use a clip top
- Allow 2-3 months for the flavour to develop but not beyond 12 months
- Unusual chutneys should have a 2nd label listing the ingredients
- Always state the amount of heat if applicable

The Judge is looking for:

- The correct presentation as described above
- Good flavour
- Good texture and colour

CLASS NO:

34. JAR OF CHUTNEY OR RELISH

35. JAR OF PICKLED VEGETABLES OR PICCALILLI

Entry forms to be in before 5.00pm Thursday 22nd August
Please bring exhibits to the Creative Hobbies marquee on
Friday 5.00pm - 8.00pm or Saturday 7.00am - 8.00am
Exhibits can be collected after the presentations at 4.00pm

Presenting Jams, Jellies, Marmalades and Curds

- Cover jars with a waxed disc and cellophane or twist top lid
- It is preferable to use new lids, old lids must be scrupulously clean and free from damage. **Never reuse chutney lids**
- **Curds must not be more than 3 weeks old and always covered with a waxed disc and cellophane**

The Judge is looking for:

- The correct presentation as described above - lids, jars, labels
- Evenly distributed fruit. Cool slightly before filling the jars
- No tough fruit skins or seeds
- Good flavour. good quality ingredients help produce a superior product
- Choose complimentary ingredients

CLASS NO:

36. **JAR OF JELLY**

37. **JAR OF STRAWBERRY JAM**

38. **JAR OF JAM**, soft fruit but not strawberry

39. **JAR OF JAM**, stoned fruit eg. plum, damson

40. **JAR OF JAM**, mixed or exotic fruits or vegetables

41. **JAR OF MARMALADE** eg. lemon, lime, orange, mixed

42. **JAR OF FRUIT CURD** eg. lemon, lime

Trophies and Awards presented at 4.00pm, Show Day



WINE

Fermentation - wine must be made by this process with no added commercial alcohol, except in liqueurs

Bottles - present wines in clear glass bottles approx 75cl.

Airspace - should be 1/2 - 1 inch below the bottom of the closure

Corks - white, plastic topped cork stoppers

CLASS NO:

43. TABLE WHITE DRY WINE

A pale colour is desirable with no brown or pink tones. Wine should be dry with no recognisable sweetness. There should be no bitter aftertaste but leave the mouth feeling clean

44. TABLE RED DRY WINE

Colour should be red but hints of purple and tawny are acceptable. There should be no recognisable sweetness

45. WHITE or GOLDEN SWEET WINE

Colour can be deeper than that of the white table wine, up to golden. Flavour should be richer than the white table wine but with enough balance to prevent a cloying finish.

46. RED SWEET WINE

Colour should be red but hints of purple and tawny are acceptable. Flavour should be richer than the red table wine with enough balance to prevent a cloying finish.

- 47. **COUNTRY WINE, DRY, WHITE**, state the main ingredient on the label eg. apple
There should be no recognisable sweetness.
The colour can range from clear to golden
- 48. **COUNTRY WINE, DRY, RED**, state the main ingredient on the label eg. blackberry
There should be no recognisable sweetness. The colour should be red but hints of purple and tawny are acceptable.
- 49. **FRUIT LIQUEUR**, 1/2 bottle
Fully flavoured and not too sweet
- 50. **NON FRUIT LIQUEUR**, 1/2 bottle
Fully flavoured, not too sweet
- 51. **ROSE MEDIUM DRY**
Colour should be pink but variations are acceptable eg. light orange and onion skin colour.
Flavour should be fresh, fruity and light with a good balance between acidity and sweetness.
- 52. **SPECIAL CLASS** - Beaverdale Shiraz
- 53. **SPECIAL CLASS** - Beaverdale Pinot Grigio

Next year in 2025 the SPECIAL CLASSES will be Beaverdale Shiraz and Beaverdale Pinot Grigio

**Entry forms to be in before 5.00pm Thursday, 24th August
Please bring your exhibits to the Creative Hobbies Marquee
on Friday 5.00 - 7.00pm OR Saturday 7.00am - 8.00am
Trophies and Awards will be presented at 4.00pm**



PHOTOGRAPHY

Adults

Amateur photographers only

No glass frames

Mount photographs on stiff paper NOT MOUNT CARD

Max size - A4

Blu Tac will be provided, please **do not staple** entries onto the display boards

CLASS NO:

54. **NATURE**, plants or animals

55. **LANDSCAPE**

56. **PORTRAIT**

57. **MONOCHROME** eg. sepia, black and white

58. **OPEN PHOTOGRAPHY**

Entry forms must be in before 5.00pm Thursday 22nd August

Please bring your exhibits to the Creative Hobbies marquee on Friday 5.00pm - 8.00pm or Saturday 7.00am-8.00am

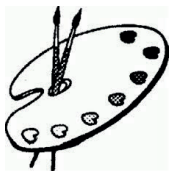
**Trophies and awards will be presented at 4.00pm Show Day
Exhibits can be collected after the presentations**

Our Photographic judge would like to share a few tips when taking photographs for competitions.

- Keep it simple. Very often photographs that win competitions are very simple.
- A good photograph is one that produces an emotional response
- Avoid cluttered backgrounds, especially those with bright highlights
- Get down low and shoot from the eye line of your subject
- Take care with composition and make sure there is a focal point
- Landscape - shoot within an hour of sunrise or sunset
- Portraits - engage with your subject and get good eye contact
- Good processing on the computer is as important as taking a good photograph
- Never go out without your camera - your best shot could be today!
- A photograph is an art form - don't expect everyone to enjoy your work.

Members of North Cheshire Photographic Society will be available on Show Day to give advice on your photographs

Uncollected exhibits will be taken to the Show Office on the Show ground.



ART (12 - 16 years)

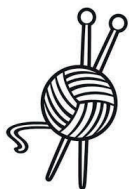
Maximum size 60cm x 50cm (24in x 20in)

All entries must be your own work

Please cover all visible signatures

Items made at school can be entered

- 59. **A FAVOURITE ARTWORK**
- 60. **A PAINTING** - any subject
- 61. **PORTRAIT** - celebrity, pets, family, friend etc. any medium
- 62. **A PAINTING IN THE STYLE OF A KNOWN ARTIST** -
state the artist
- 63. **DRAWING** - any subject, pencil, pen, charcoal, graphite etc.



CRAFTS (12 - 16 years)

Items made at school can be entered

- 64. **DECORATE ONE PEBBLE**
- 65. **WOODWORK, METALWORK, CERAMICS**, any
handmade item using *hard* materials eg. Jewellery,
- 66. **SEWING, KNITTING, CROCHETING, EMBROIDERY, WEAVING, MACRAME**, any garment or item using *flexible* materials
- 67. **OPEN CLASS** - handmade item using any material or technique
- 68. **'SAVING THE PLANET'** - rework, recycle, or up-cycle to
create something new, any material or technique, eg
patchwork, bag from old clothing,

BAKING (12 - 16 years)

**Please cover all food if bringing on Friday,
Covers will be removed prior to judging**



- 69. **BIRTHDAY OR NOVELTY CAKE** - judged visually
- 70. **SPONGE CAKE** - any shape and flavour eg. lemon drizzle, chocolate, carrot
- 71. **4 SLICES OF TRAYBAKE** - eg. flapjack, choc brownies etc
- 72. **3 COOKIES or BISCUITS**
- 73. **3 DECORATED CUP CAKES**

PHOTOGRAPHY (12 - 16 years)

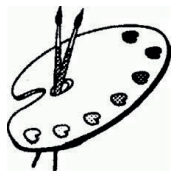
**Mount photos on thin card or stiff paper, no
frames/glass/mountboard. Max photo size A4. See
tips on page 11**



- 74. **NATURE** - plant or animal
- 75. **PORTRAIT** - pets, family, friends, animals
- 76. **ACTION SHOT**
- 77. **LANDSCAPE**
- 78. **OPEN PHOTOGRAPH**

Entry forms to be in before 5.00pm Thursday, 22nd August

**Please bring your exhibits to the Creative Hobbies Marque
on Friday 5.00pm - 8.00pm OR Saturday 7.00am - 8.00 am
Trophies and Awards will be presented at 4.00pm, please collect
exhibits afterwards.**



ART (8 - 11 years)

Maximum size A3

All entries must be your own work

79. A FAVOURITE ARTWORK

- 80. **A PAINTING** - any subject, use any colour medium
eg. flowers, pets, buildings, landscape, yourself or family
- 81. **ABSTRACT PAINTING OR PATTERN** - any medium
- 82. **COLLAGE** - any materials eg. recycled, papers, leaves etc
- 83. **DRAW AN ANIMAL OF YOUR OWN CREATION** - give it
a name.
- 84. **COLOUR IN** - a pre printed picture of your choice



BAKING (8 -11 years)

Only exhibit the specified number of cakes

Please cover all baking if bringing in on Friday

Covers will be removed before judging

- 85. **3 EGG VICTORIA SANDWICH CAKE** -
2 cakes sandwiched together with jam and dusted with caster
sugar
- 86. **NO BAKE SWEETS**
- 87. **4 TRAY BAKES** eg. flapjack
- 88. **3 OR 4 COOKIES OR BISCUITS**

CRAFTS (8 - 11 years)

All entries must be your own work.



89. **DECORATE ONE PEBBLE**

90. **DECORATE ONE HARD BOILED EGG**

91. **LEGO MODELLING** - your own design using a commercial materials

92. **MODELLING** - your own design using clay or clay type materials like Fimo, plasticine, mod roc etc

93. **ECO - MODELLING** - own design re-using old items eg. plastic bottles, packaging or natural materials like sticks and leaves

94. **SHOEBOX DIORAMA** - create a mini world within a box using recycled items if you can. Max size: 40 x 30 x 15cm

95. **SEWING, KNITTING, EMBROIDERY, WEAVING, CERAMICS**
any item showing traditional crafts

PHOTOGRAPHY (8 - 11years)

Photo size 18 x 13 cm (7in x 5in)

Mount photos on stiff paper, no frames or glass



96. **LOCAL PEOPLE AND PLACES**

97. **HAPPY HOLIDAYS**

98. **AN ANIMAL**

99. **YOUR FAVOURITE PHOTOGRAPH**

Entry forms to be in before Thursday 22nd August

Please bring your exhibits to the Creative Hobbies Marquee

Friday 5.00pm - 8.00pm OR Saturday 7.00am - 8.00am



ART (4 - 7 years)

Maximum size A3

All entries must be your own work

- 100. **FAVOURITE ARTWORK**
- 101. **A PICTURE OF 'ME', FAMILY OR FRIENDS**
- 102. **CHARACTER FROM A BOOK** - drawing or painting, say who it is.
- 103. **COLLAGE A PICTURE** - use any materials eg. recycling, papers, leaves etc
- 104. **COLOUR IN** - colour in a pre printed picture of your choice



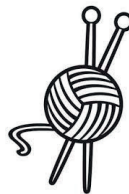
BAKING (4 - 7 years)

**Please cover food if bringing in on Friday,
it will be uncovered before judging**

- 105. **4 TRAY BAKES** - eg. rocky road
- 106. **3 COOKIES**
- 107. **3 DECORATED BOUGHT BISCUITS** - judged visually only
- 108. **3 RICE KRISPIE or CORNFLAKE CAKES**
- 109. **3 SMALL CAKES** - use a commercial cake mix

CRAFTS (4 - 7 years)

All entries must be your own work



110. DECORATE ONE PEBBLE

111. DECORATE ONE HARD BOILED EGG

112 PAPER PLATE COLLAGE OR MASK - use natural (eg leaves) or edible (eg pasta) or recycled (eg foil) materials if you can

113. PLASTIC BRICK MODEL - your own ideas

114. ECO MODELLING - your own design re-using old items eg. plastic bottles, or natural materials like sticks and leaves.

115. SHOE BOX DIORAMA - create a mini world within a box using recycled materials. Max size 40 x 30 x 15cm

PHOTOGRAPHY (4 - 7 years)

Photo size 18 x13cm (7 x 5in)

Mount photos on stiff paper or card

No frames or glass



116. A PHOTOGRAPH TAKEN BY ME

117. A PHOTOGRAPH TO MAKE YOU SMILE

Entry forms must be in before Thursday 5.00pm, 22nd August

Please bring your exhibits to the Creative Hobbies Marquee on Friday 5.00pm - 8.00pm OR Saturday 7.00am - 8.00am

**Trophies and Awards will be presented at 4.00pm, Show Day
Please collect exhibits after the presentations at 4.00pm**

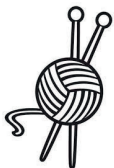


ART (under 4)

Maximum size A3

All entries must be your own work, please no adult help

- 118. **PRINTMAKING** - eg potato, hand, leaves, commercial stamping
- 119. **PICTURE of 'ME' OR MY FAMILY**
- 120. **MY FAVOURITE ARTWORK**



CRAFTS (under 4)

- 121. **BRICK MODEL** - using any commercial bricks eg. Duplo
- 122. **DECORATE ONE PEBBLE**
- 123. **PAPER PLATE COLLAGE OR MASK** - use natural (eg leaves) or edible (eg pasts) or recycled (eg foil) materials if you can



BAKING (under 4)

judged visually

- 124. **3 DECORATED BOUGHT BISCUITS**
- 125. **3 RICE KRISPIE or CORNFLAKE CAKES**

Entry forms must be in before Thursday 5.00pm Show week
Please bring your exhibits to the Creative hobbies Marquee on
Friday 5.00pm - 8.00pm OR Saturday 7.00am - 8.00am

Trophies and Awards will be presented at 4.00pm, Show Day
Please collect exhibits after the presentation

TROPHIES AND AWARDS

ROSETTES can be collected anytime during the day

Awarded to 1st, 2nd and 3rd place in each class

BEST IN SHOW ROSETTES collect anytime during the day

Awarded to the best entry in each section - art - baking - craft - wine - preserves - photography

TROPHIES presented at 4.00pm

Trophies are awarded for the most points gained in each section

1st place = 3 points, 2nd place = 2 points, 3rd place = 1 point

SCHOOLS COMPETITION ‘*Views of Lyme*’ Rosettes can be collected during the day

Certificates have been handed to schools before the end of term.

Health and Safety

All exhibitors should comply with the requirements set out in the Health and Safety Policy, for the Poynton Horticultural and Agricultural Society. Copies of the policy are available from the Society Secretary and will be displayed in the Show Office during the Show.

Specifically, all the exhibitors, trade stands and occupiers, entertainment and catering providers are required to maintain their exhibits/area in such a manner as to comply with current Health and Safety regulations and guidance and to ensure their activities do not endanger themselves or other exhibitors or members of the public. Further specific advice and guidance is available from the Show's Honorary Health and Safety Officer.

www.poyntonshow.co.uk

Personal Data

Poynton Show values your support and respects your privacy. We are committed to protecting your personal data and the processing of it, only in accordance with legal requirements. For more details please go to our website and view the ‘Private Policy’ page

www.poyntonshow.co.uk



**Entry Forms
and
more information is available on
the website**

please visit

<https://poyntonshow.co.uk/creative-hobbies/>



**please scan the QR code for tickets to
POYNTON SHOW**