

August Bank Holiday Saturday
27th August 2022

CREATIVE HOBBIES

competitive section



art - baking - crafts - wine - preserves
photography

ENTRY FORMS

these are no longer included in the schedule
please collect from;

- Poynton Information Centre
- Show Caravan
- Mates DIY, Park Lane, Poynton
- Online www.poyntonshow.co.uk

A more detailed schedule and entry forms are available online
www.poyntonshow.co.uk

HOW TO ENTER

Adult entries are **£1.00** each

Children's entries are **50p** each

ENTRY FORMS are available from Mates DIY, Poynton Information Centre, Show Caravan or download from www.poyntonshow.co.uk

1. **Use 1 entry form per person**
2. **Complete the entry form and put into an envelope with the fee**
3. **Label the envelope - CREATIVE HOBBIES**
4. **Hand into the Show Caravan on the Civic Hall car park the week before the Show**
OR post to
Creative Hobbies, 41 Micawber Road, Poynton SK12 1UP

ENTRY FORMS MUST BE IN BEFORE THURSDAY 5.00PM
the week before the show

EXHIBITS

Please bring to the Creative Hobbies Marquee on

1. **FRIDAY, 5.00pm - 8.00pm** OR
 2. **SATURDAY, 7.00am - 8.00am** on Show Day
- Exhibits are the responsibility of the exhibitor

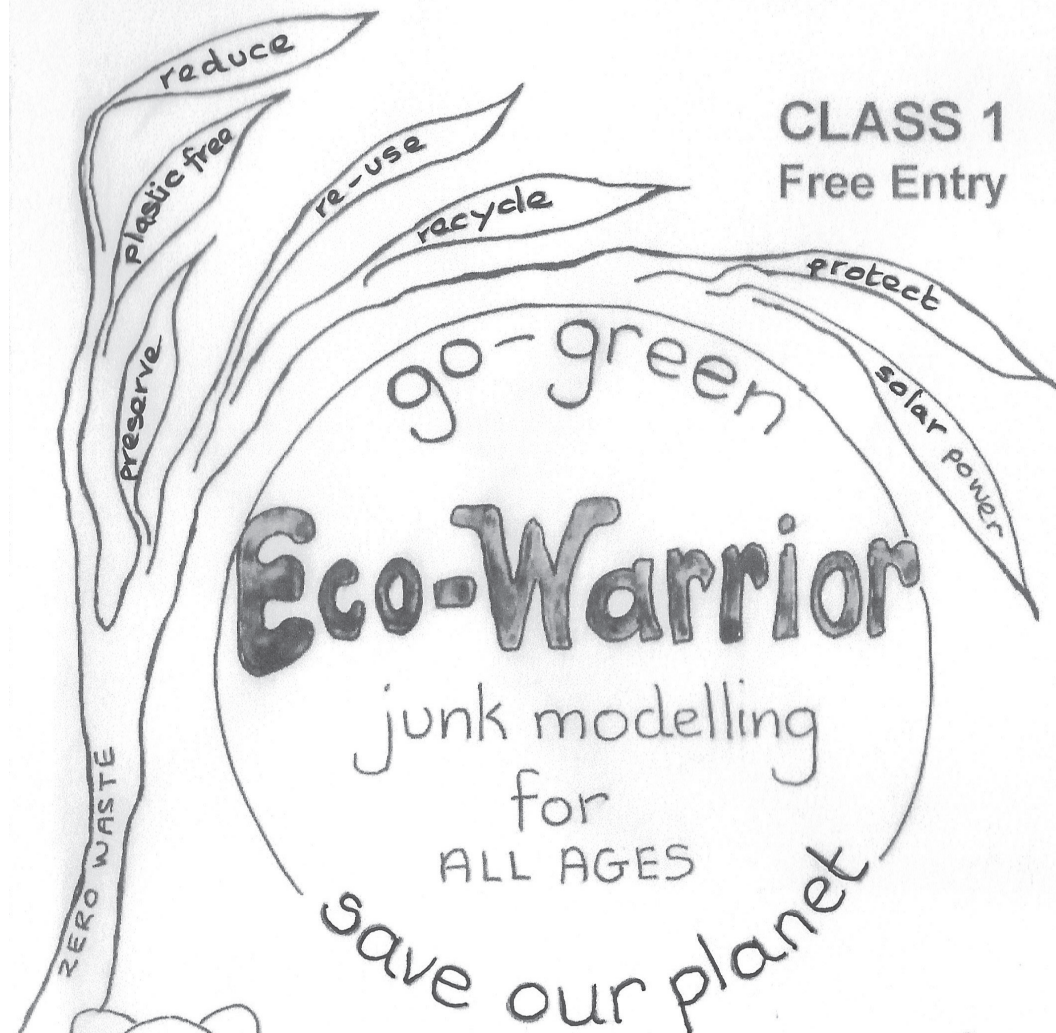
Please allow time to display your exhibits.

Marquee closes at **8.00pm FRIDAY**

Marquee closes at **8.00am SATURDAY** for judging

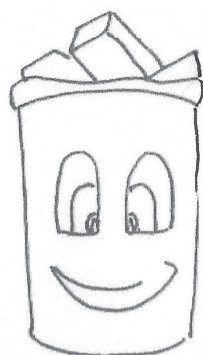
Please collect exhibits after 4.30pm when the trophies have been presented. **Trophy presentation is at 4.00pm.** Thank you

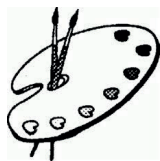
CLASS 1
Free Entry



free standing
ECO-WARRIOR model

HEIGHT more than 60cm
BASE less than 75cm x 75cm





ART

Adults

Do not exceed 60cm x 50cm (24in x 20in)

Art can be framed but please cover all visible signatures

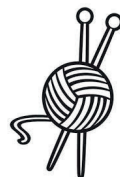
Display is on peg boards, hooks will be provided

All art must be your own and original work

CLASS NO:

2. **WATERCOLOUR** any subject
3. **LANDSCAPE or SEASCAPE**, any colour medium
4. **STILL LIFE or FLOWER STUDY**, any colour medium
5. **PORTRAIT**, any medium
6. **WILDLIFE**, any medium
7. **BLACK and WHITE DRAWING**, any subject, pen, pencil, charcoal, etching, lino print etc.
8. **'ABSTRACT'** any colour medium, includes print /collage
9. **A FAVOURITE ARTWORK**, any medium, any subject, includes social scenes, holidays, family, urban landscape etc
10. **'SAVING THE PLANET'** any medium,

CRAFTS



Adults

Presentation is on tables

Small props can be brought in to help display the items.

Props will not be considered by the judges

CLASS NO:

11. **DRESSMAKING**, any garment for child or adult
12. **HAND - KNITTED GARMENT**
13. **HAND - CROCHETED GARMENT**
14. **STITCHED KITS**, any technique
15. **HAND MADE GREETINGS CARD**, any occasion
16. **TOY FOR A CHILD**, any material eg. mobile, puppet
17. **SOFT FURNISHINGS**, a small item for the home, any material. eg. cushion, rug, quilt, etc.
18. **CERAMICS**, any small item
19. **ACCESSORIES**, eg. gloves, hat, handbag, jewellery, any material eg. wood, metal, fabric, leather
20. **OPEN CLASS**, your own ideas in any material
21. **'SAVING THE PLANET'**, reusing materials to create a different item.

Entry forms to be in before 5.00pm Thursday

**Please bring your exhibits to the Creative Hobbies Marquee
on Friday 5.00pm - 8.00pm OR Saturday 7.00am - 8.00am**

Trophies and Awards will be presented at 4.00pm, Show Day



BAKING

Adults

**Please cover food items if bringing on Friday
Exhibits will be uncovered before judging**

CLASS NO:

- 22. **3 EGG VICTORIA SANDWICH CAKE**, 2 cakes sandwiched together with jam and dusted with caster sugar.
- 23. **SPONGE CAKE**, any shape and flavour eg lemon drizzle, coffee & walnut, chocolate
- 24. **SWISS ROLL**, 3 eggs
- 25. **FRUIT CAKE**, traditional eg, fruit loaf, Dundee, Bara brith
- 26. **VEGGIE CAKE**, show the use of vegetables, state what the main ingredient is eg. carrot, courgette
- 27. **'FREE FROM' CAKE**, state what the cake is free from, eg. gluten, fat, eggs, DO NOT include tray bakes
- 28. **4 SLICES OF TRAYBAKE**
- 29. **3 or 4 COOKIES/BISCUITS** eg. shortbread, choc chip.
- 30. **3 or 4 SWEET or SAVOURY SCONES**

- 31. **FRUIT PIE using SHORTCRUST PASTRY**, top and bottom crust
- 32. **LOAF of BREAD**, any shape, any flavour
- 33. **DECORATED CELEBRATION CAKE**, 1 tier, all decoration to be edible, judged visually only
- 34. **CONFECTIONARY**, make and present approx 100g

Entry forms to be in before 5.00pm Thursday.

Please bring your exhibits to the Creative Hobbies Marquee on Friday 5.00pm - 8.00pm OR Saturday 7.00am - 8.00am

Trophies and Awards will be presented at 4.00pm, Show Day



PRESERVES

- Entries to be 8oz/225g minimum
- No visible trade marks or names on jars or lids
- Label all entries with full date of making

**DO NOT SUBMIT PRESERVES MADE BEFORE
AUGUST 2022**

CLASS NO:

35. **JAR OF FRUIT CURD** eg lemon, lime
must be no more than 3 weeks old and covered with a waxed disc and cellophane

Vinegar preserves to be covered with a plastic lined, metal lid or use a clip top jar.

Allow 2-3 months for the flavour to develop. Older than 12 months, the flavour will deteriorate.

Unusual chutneys should have a 2nd label listing the ingredients and the amount of heat if applicable.

The judge is looking for:

- The correct presentation as described above
- Good flavour, see above
- Good texture and colour

36. **JAR OF CHUTNEY OR RELISH**

37. **JAR OF PICCALILLI OR PICKLED VEGETABLES**

Jams, jellies and marmalade should be covered with either a waxed disc and cellophane OR a twist top lid.

It is preferable to use NEW lids. Older lids should be scrupulously clean and free from damage. DO NOT reuse chutney lids.

The judge is looking for:

- The correct presentation as described above - jars, lids and labels
- Evenly distributed fruit - allow to cool slightly before filling the jars
- No tough seeds or fruit skins
- Good flavour - good quality ingredients help produce a superior product
- Choose ingredients that compliment each other

38. JAR OF JELLY

39. JAR OF STRAWBERRY JAM

40. JAR OF JAM - soft fruit but not strawberry

41. JAR OF JAM - stoned fruit eg plum, damson

42. JAR OF JAM - mixed or exotic fruits or vegetables

43. JAR OF MARMALADE eg lemon, lime, orange, mixed

Entry forms to be in before 5.00pm Thursday.

Please bring your exhibits to the Creative Hobbies Marquee on Friday 5.00pm - 8.00pm OR Saturday 7.00am - 8.00am

Trophies and Awards will be presented at 4.00pm, Show Day



WINE

Fermentation - wine must be made by this process with no added commercial alcohol, except in liqueurs

Bottles - present wines in clear glass bottles approx 75cl.

Airspace - should be 1/2 - 1 inch below the bottom of the closure

Corks - white, plastic topped cork stoppers

CLASS NO:

44. TABLE WHITE DRY WINE

A pale colour is desirable with no brown or pink tones.
Wine should be dry with no recognisable sweetness.
There should be no bitter aftertaste but leave the mouth feeling clean

45. TABLE RED DRY WINE

Colour should be red but hints of purple and tawny are acceptable.
There should be no recognisable sweetness

46. WHITE or GOLDEN SWEET WINE

Colour can be deeper than that of the white table wine, up to golden.
Flavour should be richer than the white table wine but with enough balance to prevent a cloying finish.

47. RED SWEET WINE

Colour should be red but hints of purple and tawny are acceptable.
Flavour should be richer than the red table wine but with enough balance to prevent a cloying finish.

- 48. **COUNTRY WINE, DRY, WHITE**, state the main ingredient on the label eg. apple
There should be no recognisable sweetness. The colour can range from clear to golden
- 49. **COUNTRY WINE, DRY, RED**, state the main ingredient on the label eg. blackberry
There should be no recognisable sweetness. The colour should be red but hints of purple and tawny are acceptable.
- 50. **FRUIT LIQUEUR**, 1/2 bottle
Fully flavoured and not too sweet
- 51. **NON FRUIT LIQUEUR**, 1/2 bottle
Fully flavoured, not too sweet
- 52. **ROSE MEDIUM DRY**
Colour should be pink but variations are acceptable eg light orange and onion skin colour.
Flavour should be fresh, fruity and light with a good balance between acidity and sweetness.
- 53. **SPECIAL CLASS** - Beaverdale Chardonnay
- 54. **SPECIAL CLASS** - Beaverdale Cabernet Sauvignon

Next year in 2023 the SPECIAL CLASSES will be Beaverdale Merlot and Beaverdale Sauvignon Blanc

Entry forms to be in before 5.00pm Thursday
Please bring your exhibits to the Creative Hobbies Marquee
on Friday 5.00pm - 8.00pm OR Saturday 7.00am - 8.00am
Trophies and Awards will be presented at 4.00pm, Show Day



PHOTOGRAPHY

Adults

North Cheshire Photographic Society are offering one years free membership to the winners of each class in the Photography, adult section.

- Amateur photographers only
- Only 2 entries per class
- No glass or frames
- Mount photographs on stiff paper or card
- A4 maximum size of photo and mount
- Blu Tac will be provided, please don't staple to the display boards

CLASS NO:

55. **WILDLIFE**

56. **PORTRAIT**, not animal

57. **LOCAL SCENE**, please state where it was taken

58. **COUNTRY, URBAN OR COASTAL LANDSCAPE**

59. **NATURE**, flora and fauna

60. **ACTION SHOT**

61. **MONOCHROME**, e.g. sepia, black & white etc.

62. **OPEN PHOTOGRAPHY**

63. **SELFIE**

Entry forms to be in before 5.00pm Thursday

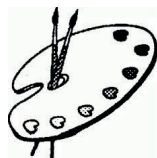
**Please bring your exhibits to the Creative Hobbies Marquee on
Friday 5.00pm - 8.00pm OR Saturday 7.00am - 8.00am**

Our Photographic judge from North Cheshire Photographic Society would like to share a few tips when taking photographs for competitions.

- Keep it simple. Competition winners are frequently very simple photographs.
- Get down low and shoot from the eye line of your subject.
- Avoid cluttered backgrounds especially those with bright highlights.
- Take care with composition and be sure there is a point of focus in your image.
- If you are shooting landscapes do it within an hour of sunrise/sunset.
- With portraits, engage with your subject and get good eye contact.
- Good post processing in the computer is as important as taking the photograph.
- A good photograph is one that produces an emotional response in the viewer.
- Never go out without a camera – your best shot may be today.
- You are producing art - don't expect everyone to enjoy your work!

Members of North Cheshire Photographic Society will be available during Show Day to give advice on your photographs.

Trophies and Awards will be presented at 4.00pm, Show Day



ART (12 - 16 years)

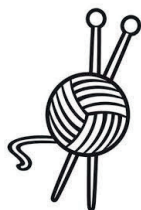
Maximum size 60cm x 50cm (24in x 20in)

All entries must be your own work

Please cover all visible signatures

Items made at school can be entered

- 64. **A FAVOURITE ARTWORK**
- 65. **A PAINTING** - any subject
- 66. **PORTRAIT** - family, friend, pets, celebrity, any medium
- 67. **A PAINTING IN THE STYLE OF A KNOWN ARTIST**,
state the artist
- 68. **DRAWING** - any subject, pencil, pen, charcoal, graphite etc.
- 69. **DESIGN** an outfit for a special occasion ie school prom, sports kit
wedding etc.



CRAFTS (12 - 16 years)

Items made at school can be entered

- 70. **DECORATE ONE PEBBLE**
- 71. **ANY ITEM TO SHOW CRAFT SKILLS** - using flexible
materials like knitting, stitching, crocheting etc
- 72. **ANY ITEM TO SHOW CRAFT SKILLS** - using hard materials like
wood, ceramics, jewellery etc.
- 73. **OPEN CLASS** - your own ideas, any material
- 74. **RECYCLING** - sustainable crafts, any item

BAKING (12-16 years)

**Please cover all food if bringing on Friday,
Covers will be removed prior to judging**



- 75. DECORATED SPONGE CAKE** - any flavour, any shape
- 76. 3 EGG VICTORIA SANDWICH CAKE** - 2 cakes sandwiched together with jam and dusted with caster sugar
- 77. 4 SLICES OF TRAYBAKE** - eg. flapjack, choc brownies etc
- 78. 3 COOKIES or BISCUITS**
- 79. 3 DECORATED CUP CAKES**

PHOTOGRAPHY (12 -16 years)

Mount photos on card or stiff paper, no frames or glass. Max photo size A4. See tips on page 14.



- 80. A LOCAL SCENE** - state where taken
- 81. PORTRAIT** - including animals
- 82. ACTION SHOT**
- 83. COUNTRY, URBAN or COASTAL LANDSCAPE**
- 84. OPEN PHOTOGRAPH**

Entry forms to be in before 5.00pm Thursday

**Please bring your exhibits to the Creative Hobbies Marquee
on Friday 5.00pm - 8.00pm OR Saturday 7.00am - 8.00 am**

Trophies and Awards will be presented at 4.00pm, Show Day



ART (8 - 11 years)

Maximum size 60 x 50cm (24in x 20in)

All entries must be your own work

85. A FAVOURITE ARTWORK

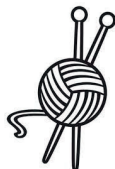
86. PAINTING - a subject you have seen, use any colour medium
eg. flowers, pets, buildings, landscape, yourself or family

87. ABSTRACT PAINTING OR PATTERN - any medium

88. COLLAGE - any materials including natural materials

89. DRAW AN ANIMAL OF YOUR OWN CREATION - give it
a name. A4 MAX

90. COLOUR IN - a pre printed picture of your choice



CRAFTS (8 - 11 years)

All entries must be your own work

91. DECORATE ONE PEBBLE

92. DECORATE ONE HARD BOILED EGG

93. A MODEL - own design using commercial materials
like Lego, Fimo, Mod Roc etc

94. FREE MODELLING - use recycled items or natural materials
like sticks, leaves to create an imaginative model

95. SHOE BOX DIORAMA - create a mini world within a shoe box
using recycled materials

96. SEWING, KNITTING, EMBROIDERY, WEAVING, CERAMICS
any item showing traditional skills

BAKING (8 - 11 years)

Please cover food if bringing in on Friday, it will be removed before judging

Only exhibit the specified number of cakes



- 97. **3 EGG VICTORIA SANDWICH CAKE** - 2 cakes sandwiched together with jam and dusted with caster sugar
- 98. **NO BAKE SWEETS**
- 99. **3 DECORATED CUP CAKES**
- 100. **3 OR 4 COOKIES OR BISCUITS**
- 101. **4 TRAY BAKES** eg. flapjack

PHOTOGRAPHY (8 - 11years)

Photo size 18 x13 cm (7in x 5in)

Mount photos on card or stiff paper, no frames or glass



- 102. **A LOCAL SCENE** - please state where it was taken
- 103. **HAPPY HOLIDAYS**
- 104. **AN ANIMAL**
- 105. **SELFIE**

Entry forms to be in before 5.00pm Thursday

Please bring your exhibits to the Creative Hobbies Marquee on Friday 5.00pm - 8.00pm OR Saturday 7.00am - 8.00am

Trophies will be presented at 4.00pm, Show Day



ART (4 - 7 years)

Maximum size 60 x 50cm (24in x 20in)

All entries must be your own work

- 106. **FAVOURITE ARTWORK**
- 107. **A PICTURE OF 'ME'** - any medium
- 108. **A PAINTING OF YOUR GARDEN**
- 109. **CHARACTER FROM A BOOK** - drawing or painting, say who it is.
- 110. **COLLAGE A PICTURE** - use any materials including natural
- 111. **COLOUR IN** - colour in a pre printed picture of your choice



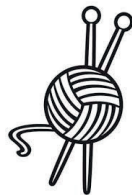
BAKING (4 - 7 years)

**Please cover food if bringing in on Friday,
it will be uncovered before judging**

- 112. **4 TRAY BAKES** - eg. rocky road
- 113. **4 NO BAKE SWEETS**
- 114. **3 DECORATED BOUGHT BISCUITS** - judged visually only
- 115. **3 SMALL CAKES** using a commercial cake mix

CRAFTS (4 - 7 years)

All entries must be your own work



- 116. **DECORATE ONE PEBBLE**
- 117. **DECORATE ONE HARD BOILED EGG**
- 118. **MAKE A MASK** - any size and from any materials
- 119. **PLASTIC BRICK MODEL** - using your imagination
- 120. **JUNK MODELLING** - use recycled materials to create an imaginative model
- 121. **SHOE BOX DIORAMA** - create a mini world in a shoe box using recycled materials

PHOTOGRAPHY (4 - 7 years)

Photo size 18 x13cm (7 x 5in)

Mount photos on stiff paper or card

No frames or glass



- 122. **A PHOTOGRAPH TAKEN BY ME**
- 123. **SELFIE**

Entry forms must be in before Thursday 5.00pm

**Please bring your exhibits to the Creative Hobbies Marquee
on Friday 5.00pm - 8.00pm OR Saturday 7.00am - 8.00am**

Trophies and Awards will be presented at 4.00pm, Show Day

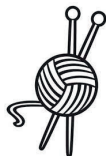


ART (under 4)

Maximum size 60x50cm (20x24in)

All entries must be your own work, please no adult help

- 124. **PRINTMAKING** - eg potato, hand, leaves, commercial stamping
- 125. **PICTURE of ME** - any medium
- 126. **MY FAVOURITE ARTWORK**



CRAFTS (under 4)

- 127. **BRICK MODEL** - using any commercial bricks eg. Duplo
- 128. **DECORATE ONE PEBBLE**
- 129. **DECORATE ONE PAPER PLATE** - eg an animal or human face, pattern, garden



BAKING (under 4)

judged visually

- 130. **3 DECORATED BOUGHT BISCUITS**
- 131. **3 CHOCOLATE RICE KRISPIE or 3 CORNFLAKE CAKES**

Entry forms must be in before Thursday 5.00pm Show week
Please bring your exhibits to the Creative hobbies Marquee on
Friday 5.00pm - 8.00pm OR Saturday 7.00am - 8.00am

Trophies and Awards will be presented at 4.00pm, Show Day

Health and Safety

All exhibitors should comply with the requirements set out in the Health and Safety Policy, for the Poynton Horticultural and Agricultural Society. Copies of the policy are available from the Society Secretary and will be displayed in the Show Office during the Show.

Specifically, all the exhibitors, trade stands and occupiers, entertainment and catering providers are required to maintain their exhibits/area in such a manner as to comply with current Health and Safety regulations and guidance and to ensure their activities do not endanger themselves or other exhibitors or members of the public. Further specific advice and guidance is available from the Show's Honorary Health and Safety Officer.

www.poyntonshow.co.uk

Personal Data

Poynton Show values your support and respects your privacy. We are committed to protecting your personal data and the processing of it, only in accordance with legal requirements. For more details please go to our website and view the 'Private Policy' page

www.poyntonshow.co.uk

CREATIVE HOBBIES

Welcome back to Creative Hobbies, we hope you are excited and eager to join in the fun. We have made a few changes to the 2022 schedule but a lot of your favourites are still included. If you have ideas and suggestions you might like to see next year do let us know on Show Day.

We always welcome new volunteers, come and be part of the team!

THERE ARE NO ENTRY FORMS IN THE SCHEDULE
please go online www.poyntonshow.co.uk



Further information is available from the
Show Office
Poynton Horticultural and Agricultural Society
'Poynton Show'
% Poynton RBL, Georges Road West, Poynton,
Cheshire SK12 1JY
tel: 07442 532450

